



---

FUND FOR THE ARTS

**2024**  
**ANNUAL**  
**REPORT**

---

75 YEARS  
IN THE  
CITY OF ARTISTS

# LETTER FROM THE **PRESIDENT & CEO**



Andre Kimo Stone Guess,  
Photographer Bill Wine

My first two years at the Fund for the Arts were about listening, learning, and taking what we learned and forging it into a plan for the future. My third year at the Fund has been focused on executing those plans and in my fourth year we are working on sustainability, ensuring that the work we do and the way we do it can continue for years to come.

In April 2024, Fund for the Arts turned 75 years old, making it one of the two oldest United Arts Funds in the country. Back in 1949, Mayor Charles Farnsley gathered a small group of arts supporters in the basement of the Louisville Free Public Library. Together, they formed a volunteer board that raised \$99,000 for local arts organizations. 35 years later, in 1984, Fund for the Arts first started crowdfunding through our workplace campaigns. Generous individuals across every local industry opened their wallets to support the arts in Louisville via payroll

deduction. From bankers to teachers to third-shift technicians, healthcare workers, and attorneys, the city continues to rally behind the arts community we are so proud to have.

With sustainability as our goal, and access for all and equity as our guide, Fund for the Arts evolved. Five arts organizations received funding in 1949. This year, 27 organizations applied and went through the same due process to be awarded unrestricted operational support grants that empower them to make bold creative decisions, employ passionate artists and administrators and live out their missions. We have also expanded our work in facilitating grants for teachers who want to incorporate arts into their classrooms; grants that support FREE, community events; free programming via teaching artists in local community centers with Louisville Metro Government and the HeARTS program; and, alongside our partners, Louisville Metro Government and Louisville Free Public Library, Bullitt County Public Library, Jeffersonville Township Public Library, Charlestown-Clark County Public Library, Floyd County Library, and Harrison County Public Library, we have initiated the work on expanding the beloved Cultural Pass program.

As we look toward the future, we know that there will be challenges we cannot predict, but we also know those challenges will create opportunities we would not have imagined. No one suspected a global pandemic would throw the world into disarray. But studies show that, during lockdown, more people got inspired to try a new creative activity. And that eagerness to try something new, invest in our art on an individual level, is still so powerful and present. And when something resonates with you, the next step is sharing it with others. This is how we sustain our arts community—it starts with each of us.

A lot has changed in 75 years, but the work has not. I hope you will see in this report the work that the Fund for the Arts team, including our staff, our board—led by powerhouse Nicole Yates, our workplace campaign chairs, our partner organizations, our generous donors, and everyone who believes in the power of art to change lives, have done to support this extraordinary city of artists.

**Andre Kimo Stone Guess**  
President and CEO of Fund for the Arts



**75 YEARS**  
IN THE  
**CITY OF ARTISTS**

# OUR MISSION

**At the Fund for the Arts, we believe that art is a right, not a privilege, because art is a fundamental expression of the human condition.**

FFTA supports, promotes, and develops arts, artists, and arts organizations to help create a healthy and vibrant community for all. Since our founding in 1949, we have raised over a quarter billion dollars that have directly and indirectly benefitted millions of people and scores of organizations in our community.



Fund For The Arts 75th Birthday Open House, Photographer Bill Wine

## **Vision | The community we want to live in**

We envision a healthy and vibrant community where:

**Everyone embraces** the art that exists in our lives every day,  
**Everyone contributes** to the well-being of our arts community,  
and it is understood that  
**Everyone belongs** to the arts community

## **Mission | How we create and sustain that community**

We contribute to the overall health and well-being of our community by:

**Generating resources** for, **investing** in, and **supporting** our local arts, artists, and arts organizations

## **Values | Guiding principles for our organizational community**

**Equity** | Listen to, engage with, invest in, and support historically excluded individuals, groups, and communities

**Belonging** | Create a safe and welcoming environment for engagement where an invitation is not required

**Accountability** | Be who we say we are, and do what we say we will do for each other and the community we support

**Stewardship** | Manage the resources that have been entrusted to us equitably and responsibly

**Gratitude** | Value one another and the community we support

**Storytelling** | Tell the stories of arts, artists, and arts organizations in our community however, whenever, and to whomever we can

**Learning** | Continue to be curious and seek opportunities to expand our knowledge and understanding

## **Strategies | The specific work we do in the community**

**We Generate Resources** for arts, artists, and arts organizations in our community

**We Invest** in arts, artists, and arts organizations in our community

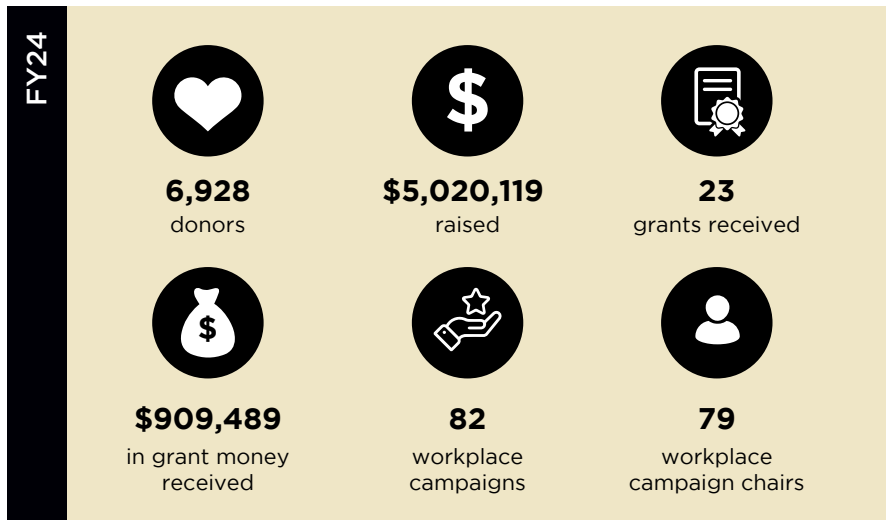
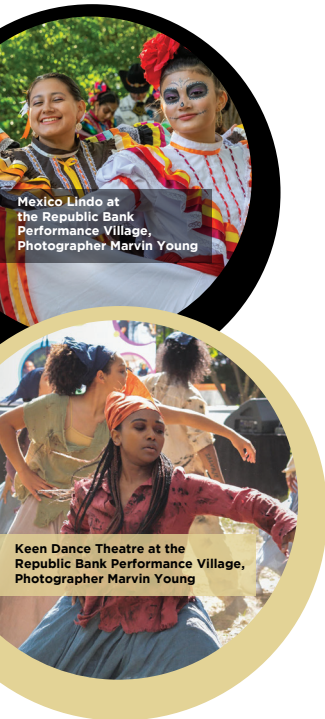
**We Support** arts, artists, and arts organizations in our community



Cheryl Guess and Fund for the Arts Board Chair Nicole Yates at the Fund for the Arts 75th Birthday Open House, Photographer Bill Wine

# GENERATING RESOURCES

## FY24 DONOR STATS



## Workplace Campaign **Participating Industries:**

- Accounting
- Architecture & Engineering
- Banking
- Brokers and Finance
- Communications
- Contractors & Construction
- Education
- Food & Beverage
- Government
- Health Services
- Insurance
- IT
- Legal Services
- Manufacturing
- Nonprofit
- Printing
- Real Estate
- Utilities

"I give to the Fund because art has shaped my life in a positive way. My longest and closest friendships are with other musicians. Making and appreciating music together is a strong bond. We are all artists in some way. Whether we enjoy singing along to our favorite songs, dancing with a loved one, or acting to win a round in charades with friends, art connects people. One of my favorite things is sitting with my children drawing or painting together. The joy on their faces when we are creating art is priceless.

I enjoy being a workplace chair and encouraging colleagues to give to the Fund because I know the positive impact the Fund is having on the community. So many opportunities that I had available to experience art as a young child are being provided by the Fund. With so many budget cuts with schools, it is imperative that we help fill in the gaps. **This is why I love to help educate others that the Fund is doing these things. Whether you enjoy being entertained by art or are providing art, it helps all our communities thrive."**

- Rob Bratcher

2024 Workplace Chair,  
Employee Relations & Recruiting Manager at Stock Yards Bank & Trust





# COMMUNITY INVESTMENT

## ARTS IN INSTITUTIONS

### Sustaining **Impact Grant**

Sustaining Impact Grants (SIG) provide mission-based operating support to Greater Louisville nonprofit arts organizations to ensure the organizations' ongoing capacity to drive community impact. Unrestricted operational funding is some of the hardest to come by and makes all the difference for our local arts institutions.



**27**

Sustaining Impact  
Grants awarded



**\$2.3 Million**

invested via SIG



#### **Artistic disciplines represented in FY24:**

Arts Education, Dance, Folk & Traditional Arts, Literary Arts, Media Arts, Museums, Music, Opera, Presenting & Multidisciplinary Works, Theater, and Visual Arts

75 years ago, only five arts organizations received Fund for the Arts operational support. Today, the Sustaining Impact Grant application is open to any arts organization that meets eligibility requirements, expanding the scope of community investment in the arts exponentially.

The Sustaining Impact Grant is guided by the mission of the Fund for the Arts as well as community-driven priorities within Imagine Greater Louisville 2025. Grantees include organizations representing a wide variety of artistic disciplines including Arts Education, Dance, Folk & Traditional Arts, Literary Arts, Media Arts, Museums, Music, Opera, Presenting & Multidisciplinary Works, Theater, and Visual Arts.

"The Sustaining Impact Grant has been instrumental in advancing the mission of the Louisville Folk School, which is to engage the folk music traditions of Kentuckians through education and performance, build on the rich cultural history of the Bluegrass State, and create community through the arts.

**The grant provided critical funding that allowed us to build our organizational capacity, deliver high-quality educational programs to both youth and adults, and increase our capacity to expand our reach across the city."**

- **Dave Howard**

Executive Director of Louisville Folk School



"Support from the Sustaining Impact Grant is essential to Pandora Productions' ability to produce a high quality season of plays and musicals that not only speak to the **experiences of individuals who identify as LGBTQIA+, but also highlight intersectionality and create opportunities to connect.**"

- **Michael Drury**

Artistic Director of  
Pandora Productions  
(Retired 2024)



# COMMUNITY INVESTMENT

## ARTS IN INSTITUTIONS

### FY24 Sustaining Impact Grantees

- ★ Actors Theatre of Louisville
- ★ Amped
- ★ Arts Alliance of Southern Indiana
- ★ Commonwealth Theatre Center
- ★ IDEAS xLab
- ★ Kentucky Opera
- ★ Kentucky Shakespeare
- ★ KMAC Museum
- ★ The Little Loomhouse
- ★ Looking for Lilith Theatre Company
- ★ The Louisville Academy of Music
- ★ Louisville Ballet
- ★ Louisville Folk School
- ★ Louisville Orchestra
- ★ Louisville Story Program Inc.
- ★ Louisville Visual Art
- ★ Louisville Youth Choir
- ★ Louisville Youth Orchestra
- ★ Pandora Productions
- ★ Portland Museum
- ★ Prominent Youth of America
- ★ Queer Kentucky
- ★ Redline Performing Arts
- ★ Speed Art Museum
- ★ Squallis Puppeteers
- ★ StageOne Family Theatre
- ★ Young Authors Greenhouse



### Did you know...



3

recipients are  
first-time applicants



1-110 Employees

Staff sizes vary from  
1 - 110 employees



“Prominent Youth of America (PYOA) is very proud and excited to receive the Sustaining Impact Grant from Fund for the Arts. We acknowledge this is a huge accomplishment for our organization to provide quality Arts & Educational experiences to participants in our programs. **This opportunity will allow us to continue providing Free arts experiences and educational resources to youth who reside in low-income communities.**”

– **LaVon Clack**  
President of Prominent Youth of America



Summer Reading and Cultural Pass Kickoff Day 2024, Photography by Two Hearts Media

# Cultural Pass

## Celebrating Cultural Pass



2024 marked the 11th summer of Cultural Pass, which offers FREE admission for individuals ages 0 - 21 to arts and culture venues across Greater Louisville and Southern Indiana. The Pass launched alongside the public libraries' summer reading initiative—both programs are designed to prevent summer learning loss and inspire young people to engage in their local arts and culture sector.

### FY2024



**36,570**  
passes  
distributed



**63,082**  
individual  
visits



**167**  
unique KY &  
IN zip codes



**\$299,556**  
total  
investment



### Introducing Senior Pass!

With support from the Humana Foundation and the University of Louisville Envirome Institute, Fund for the Arts and participating venues launched the Senior Cultural Pass Pilot Program for individuals ages 65+! Participants filled out a survey before and after using their Senior Pass, helping to gather data on how engagement with arts and culture programming helps combat loneliness in seniors. This Pilot Program is laying the groundwork for the Cultural Pass App and expansion!

“We noticed a need in our community for a free art space, which we could provide with this first year with the Cultural Pass. **Many parents/caregivers with young children, including infants, joined and created art together, using the open space to chat and connect with others.** Positive feedback inspired us to explore ways to offer this service year-round, even if only once or twice a month.”

- Jeffersonville Public Art; NoCo Art Center

“We had several young families attend the Naturalization Ceremony held on our site during our Cultural Pass event. They all were amazed at how powerful the ceremony was, and were so glad that their young children were able to use their Cultural Pass to see America's newest citizens welcomed on the 4th of July. **They were so pleased to see an event that taught their children about becoming engaged citizens!**”

- Historic Locust Grove

“I was able to **participate in new experiences with my child.** Watching their world expand in front of my eyes is a priceless experience.”

- Parent of Passholder

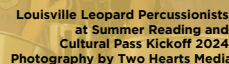


Commonwealth Theatre Center, *Charlie and the Chocolate Factory*, Photography by Crystian Wiltshire

Summer Reading and Cultural Pass Kickoff Day 2024, Photography by Two Hearts Media



## 2024 Cultural Pass **Venues**



- ★ 21c Museum Hotel
  - ★ Actors Theatre of Louisville
  - ★ Alberta O. Jones Park
  - ★ Ambo Dance Theatre, Inc.
  - ★ Angles Selfie Museum
  - ★ Arts Alliance of Southern Indiana
  - ★ ARTxFM
  - ★ Bernheim Arboretum and Research Forest
  - ★ Blackacre Conservancy
  - ★ Commonwealth Theatre Center
  - ★ Conrad-Caldwell House Museum
  - ★ Corydon Capitol State Historic Site
  - ★ Culbertson Mansion State Historic Site
  - ★ The Falls of the Ohio State Park
  - ★ Farmington Historic Plantation
  - ★ The Filson Historical Society
  - ★ Flamenco Louisville
  - ★ The Floyd County Library Cultural Arts Center
  - ★ The Food Literacy Project
  - ★ Frazier History Museum
  - ★ Guru Vandana Academy, Inc.
  - ★ Harrison County Discovery Center
  - ★ Historic Locust Grove
  - ★ Jeffersonville Public Art: NoCo Art Center
  - ★ Kentucky Derby Museum
  - ★ Kentucky Science Center
  - ★ Kentucky Shakespeare
  - ★ KMAC Museum
  - ★ The Little Loomhouse
  - ★ Looking for Lilith Theatre Company
  - ★ The Louisville Ballet School
  - ★ The Louisville Leopard Percussionists
  - ★ Louisville Nature Center
  - ★ Louisville Visual Art
  - ★ Louisville Water Tower
  - ★ Louisville Youth Choir
  - ★ Louisville Zoo
  - ★ Lovely-Allen Art, LLC
  - ★ Muhammad Ali Center
  - ★ The Parklands of Floyds Fork
  - ★ Riverside, the Farnsley-Moremén Landing
  - ★ Roots-101 African American Museum
  - ★ Speed Art Museum
  - ★ StageOne Family Theatre
  - ★ Waterfront Botanical Gardens
  - ★ Yew Dell Botanical Gardens

**- Parent of Passholder**

**Sam and Bonnie Rechter  
Family Foundation**



# COMMUNITY INVESTMENT

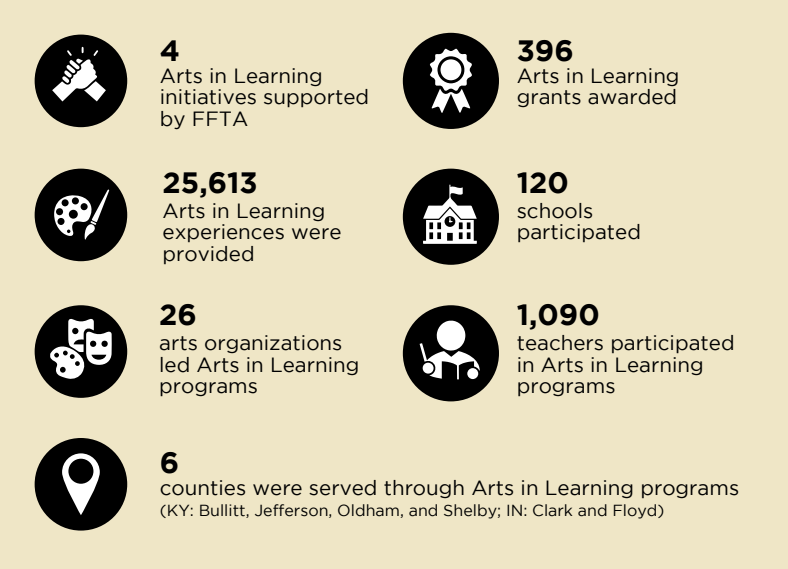
## ARTS IN LEARNING

Fund for the Arts provides curriculum-based Arts in Learning programs to schools and community centers across the region, expanding access to the arts for all students. FFTA serves as a connector between teachers and out-of-school time educators to arts program providers that will complement classroom curriculum and learning.

### FY24 Arts in Learning Initiatives included:

- 5x5 and Teacher Arts Grants (TAG)
- Baird Teacher Excellence and Barbara Sexton Smith Education Enhancement Fund Awards
- Elev8 Student Learning Center Artist Residencies
- Scholastic Art Awards

### FY2024



Republic Bank Performance Village, Photographer Bill Wine



The Little Loomhouse, SummerWorks 2024, courtesy of The Little Loomhouse



“Our 3rd & 4th grade students had the honor and privilege of watching *The History of Now!* Our students were engaged and captivated by this performance. The poetry references were relevant. I even heard a teacher say, “we are learning about this now”! **This performance demonstrated the power of “VOICE” for our students. THANK YOU SO MUCH for providing this opportunity.”**

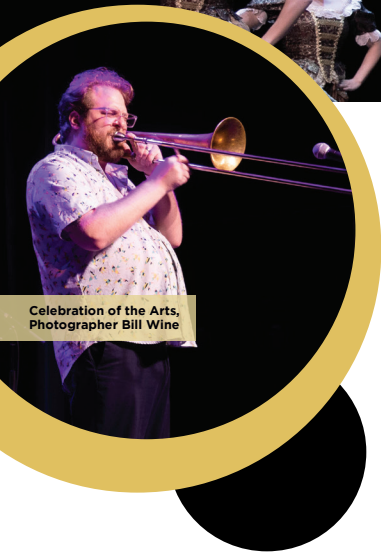
– Nicole Joyner,  
Family Resource Center Coordinator, Eisenhower Elementary School  
***The History of Now* by Keith McGill from Commonwealth Theatre Center**  
(now StageOne Family Theatre).



Celebration of the Arts, Photographer Bill Wine



Louisville Ballet at the Celebration of the Arts, Photographer Bill Wine



Celebration of the Arts, Photographer Bill Wine

## COMMUNITY INVESTMENT

### ARTS IN NEIGHBORHOODS

#### Arts in Neighborhoods **Event Series**

Fund for the Arts hosted two events in the Fall of 2023 celebrating artists and arts organizations from across the community and giving them a chance to share their artwork with new audiences.

#### **The series resulted in approximately 200,450 arts experiences:**

Celebration of the Arts - September 9, 2023 at Old Forester's Paristown Hall

- Performances from Keen Dance Theatre, Kentucky Shakespeare, Louisville Ballet, Louisville Jazz Initiative, and Louisville Public Media
- Programming from The Little Loomhouse, Louisville Folk School, Louisville Visual Art, Sarabande Books, Steam Exchange

#### ★ **Presented by Churchill Downs with support from Brown-Forman and UPS, with media sponsor Louisville Public Media**

Republic Bank Performance Village - Oct 6 - 8, 2023 at the St. James Court Art Show in Old Louisville

- Performances from Actors Theatre of Louisville, ARTxFM, DESTINED Dance, Faith Works Studios, Flamenco Louisville, Hui Kaululehua, Keen Dance Theatre, Kentucky Shakespeare, Looking for Lilith Theatre Company, Louisville Folk School, Louisville Jazz Initiative, Mexico Lindo, Pandora Productions, Rhythm Science Sound, River Lotus Lion Dance, University of Louisville African American Theatre Program

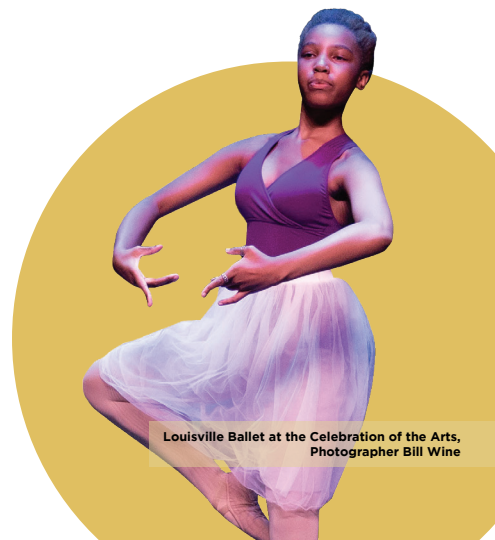
#### ★ **Presented by Republic Bank with support from Passport by Molina Healthcare**



Celebration of the Arts, Photographer Bill Wine



Steam Exchange at the Celebration of the Arts, Photographer Bill Wine



Louisville Ballet at the Celebration of the Arts, Photographer Bill Wine



Keen Dance Theatre at Americana Community Center, courtesy of Keen Dance Theatre



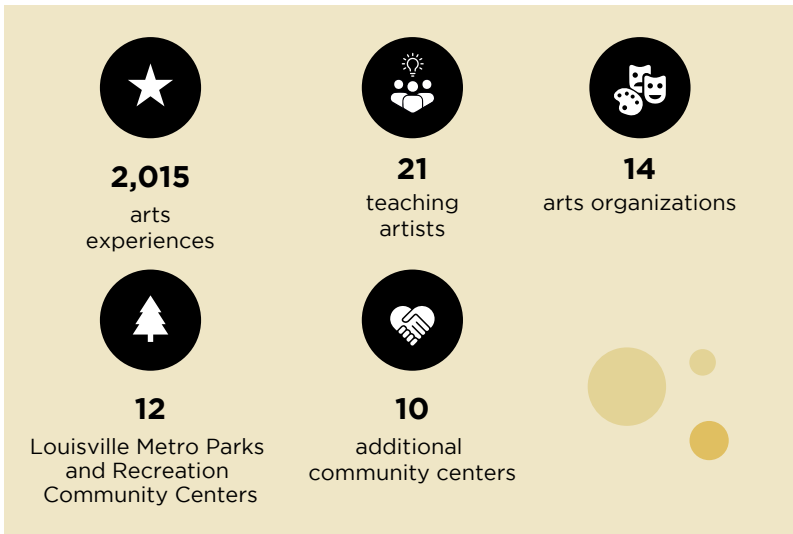
Berrytown Community Center, courtesy of Anastasia Teper-Carrasquillo

# COMMUNITY INVESTMENT

## ARTS IN NEIGHBORHOODS

### HeARTS: Healing Through the Arts

Fund for the Arts and 22 community spaces across Jefferson County facilitated the HeARTS: Healing Through the Arts program, a Louisville Metro Government initiative in community centers across the city, offering free, intergenerational arts programs and workshops designed to facilitate healing.



“One participant returned to the HeARTS program this year at 17 years old, very different from the year before. **Through art, he was able to find a peaceful part of himself that he was able to get connected with, and would come in to work by himself and want to help out in the space.**”

– A story from Anastasia Teper-Carrasquillo at Berrytown Community Center

“Zachory, age 76, began attending open studio with his daughter. Though she had to talk him into going, **he began to look forward to being out in the community he was raised in, and found it to be a stress-free environment to tap into his creativity.**”

– A story from Youngblood Harmonizing Arts at the Kentucky Center for African American Heritage

“With encouragement from the instructor and other students, Addie went from refusing to speak in class to **leading the warm-up stretches, speaking about her work, and being present and social with the students in her class and her residence.**”

– A story from Healing Walls Project at Options to Success



Sun Valley with Erica Rucker and Skylar Smith, courtesy of Erica Rucker and Skylar Smith



Rebecca Cavalcante, Teen Art Club, Portland Community Center, courtesy of Rebecca Cavalcante





Mahogany Mayfield,  
Sisterhood, Joy, and Care Retreat,  
courtesy of Mahogany Mayfield

"This opportunity was INCREDIBLE! I am so deeply grateful and plan to apply again. Opportunities like this are essential for the community to connect and be resourced in creating brave and creative spaces.

**This is how community should be funded and supported."**

– Mahogany Mayfield  
Sisterhood, Joy, and  
Care Retreat



Young Hearts Theatre Inc,  
courtesy of Young Hearts Theatre Inc.

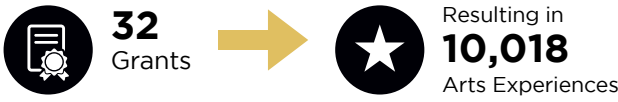
# COMMUNITY INVESTMENT

## ARTS IN NEIGHBORHOODS

### Community Event **Mini-Grant**

Community Event Mini-Grants support arts organizations, businesses, neighborhood associations, individual artists, groups of artists, non-arts nonprofits, and community-based organizations presenting multi-disciplinary, multi-generational, FREE gatherings with arts components in communities. This grant initiative, only in its second year, supported events all across the city!

#### In FY24, Community Event Mini-Grants supported:



#### FALL 2023

- Boys & Girls Clubs of Kentuckiana & University of Louisville: The ART Works Mental Health & Drug Prevention Summit
- Faith Works Performing Arts: Fall Family Arts Festival
- houseguest gallery: "fabric of my Affectionate Memory," a new body of work by Emma Safir (New York City, NY) as a part of the Louisville Photo Biennial
- Jaylin Stewart with Lavette Kitchen and Catering: "TheArtistsGiving"community Thanksgiving dinner/gathering at Essence Premier
- Louisville Book Festival and Louisville Free Public Library: The Louisville Book Festival
- Portland Museum: 10th Annual Portland Art and Heritage Fair
- The Louisville Orchestra and Jon Cherry: "The Little Mercies," an exhibition of Cherry's work, as part of the Louisville Photo Biennial

#### WINTER 2023/2024

- WithFriends with The Chapel of St. Philip Neri: Third Annual "Black To The Future: A Celebration of African American Culture and Music"
- We Are Children With a Purpose, Inc. with Harvey Hausley: A Fashion Show and Showcase at Hotel Louisville featuring works created by urban youth following 8 weeks of art classes
- Kaylyn's House of Joy, Inc. with Kiara Brewer: Grand Opening of the Z-Nation Resource Center, featuring "Speak Up!" a Z-Nation Choir debut
- Frazier History Museum with The Mary Shelley Electric Company: Free Family Day at the Museum.



The ART Works Mental Health &  
Drug Prevention Summit,  
courtesy of Boys and Girls Clubs of Kentuckiana



## SPRING 2024

- 300FOR300 Sunday Family Dinners, led by the Therapy Lounge
- Young Hearts Theatre Inc with Sacred Heart School for the Arts: *Westward Ho!* An original musical production
- LouiEvolve with Change Today Change Tomorrow: LouiEvolve Hip Hop & Arts Festival
- Erica Lewis with Portland Museum: CeLOUbrate Print
- Steam Exchange Community Arts Center with Rhythm Science Sound: 5th Annual Feminist Fashion Show
- Hope Garden and Pivot to Peace Russell: Hope Garden Mural Project
- Parks Alliance of Louisville and Redline Performing Arts: Alberta O. Jones Park Day
- Kentucky Shakespeare with Olmsted Parks Conservatory: *A Midsummer Night's Dream* at Wilkerson Park in Sellersburg, Indiana and Shawnee Park
- Actors Theatre of Louisville and Drag Daddy Productions: *Won't you be my May-bor?* A Drag + Mr. Rogers + An Escape Room
- Naveen Chaubal with Hyphen Film Center: Flowers, celebrating the 50th anniversary of the Filipino film classic, *Manila in the Claws of Light*
- Side by Side Inc.: Art in the Park

## SUMMER 2024

- JonAnthony Floyed-Jackson: Jazz Jam Session at The Monarch
- Mexico Lindo Quinceañera Celebration at Bourbon Hall
- S.A.N.F.A.N. [See A Need Fill A Need] with Louisville Organizing Arts Group: "Dream a World of Superheroes"
- Black Future Fest with the Hope Garden: Black Future Fest
- West Louisville Women's Collaborative with the Chickasaw Neighborhood Federation: "8th of August," a family reunion-style event for Kentucky's Emancipation Day
- This Bridge Theatre and Louisville Youth Group: *Over My Dead Body: A Ghost/Zombie Variety Spectacular Featuring Marilyn Monroe and George Washington*
- Young Authors Greenhouse and Foxing Books: Readers and Writers Fair
- Mahogany Mayfield with Maya Black: Sisterhood, Joy, and Care Retreat
- IDEAS xLab and Jaylin Stewart: *Broken Wings Still Fly*, performance and Coloring Book Release
- Change Today, Change Tomorrow and Life4YOUth: Fall Festival

"The ability to host a free event for the public proved to be immensely beneficial for all participating organizations. It provided a platform for them to showcase their work and connect with the community. **These three budding artists experienced firsthand the magic of live music in a venue outside the confines of school.** Their aspirations to pursue careers in the arts, nurtured through daily practice, were enriched by witnessing the talents showcased that evening."

- **WithFriends**, Black to the Future



# SUPPORT

## NeXt! Ambassador Program

The 2024 graduates of the NeXt! Ambassador Leadership Development Program are prepared to serve as effective, transformative board members and volunteer leaders for arts organizations. The 2024 NeXt! Ambassadors are:

**James Adams**  
Stock Yards Bank and Trust

**Adetokunbo Adeniyi**  
GE Appliances

**Abigail Bauer**  
Access Care

**Tamekka Cornelius**  
Kentucky Performing Arts

**Rebekah Courtney**  
Louisville Tourism

**Sachin Devkar**  
Semonin Realtors

**Casey Foley**  
Department of Agriculture (USDA)

**McKenzie Gary**  
RoamVista

**Sydney Harbin**  
Muhammad Ali Center

**Carrie Hardaway**  
Home of the Innocents

**Eli Jacob**  
Catholic Charities of Louisville

**Nicole Kaforski**  
University of Louisville

**Jeliah Logan**  
C2 Strategic Communications

**Erica McDaniel**  
Big Brothers Big Sisters

**Alex Mercer**  
Lockett & Farley

**Saravanan Murugan**  
Humana

**Joel Mwambayi**  
Edward Jones

**Emily Neat**  
Mercer

**Devin Payne**  
Culbertson Mansion State Historic Home Site

**Sarah Pennington**  
Pottery With a Purpose, Artist

**Jesten Slaw**  
Legal Aid Society Louisville

**Sara Smith Bowman**  
Leadership Louisville Center

**Ryan Stevens**  
Frost Brown Todd LLP

**DéQuan Tunstull**  
Musician

**Maria Villares**  
Fund for the Arts (ad-hoc member)

**Jared Williams**  
GE Appliances

**Jenna Williams**  
Brown-Forman

**Mary Wurtz**  
The Council of State Governments

NeXt! Class Graduation, Photographer Bill Wine

NeXt! Class Graduation, Photographer Bill Wine

## FINANCIALS | FY24 CAMPAIGN PLEDGES AND OTHER REVENUES

**Net Revenue** **5,968,307**

### Community Investment & Support

Initiatives	3,982,057
Program Expenses	919,033
Initiatives & Program Expenses *	4,901,090
Fundraising Expenses	823,460
Management and General Expenses	375,880

**Total Community Investment & Support** **6,100,430** **100%**

**Net Assets-End of Year** **7,789,297**



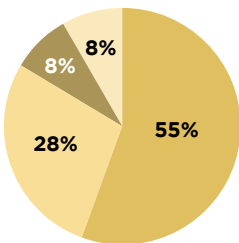
80% of \$\$ spent invested in investment initiatives & programs



Total NET ASSETS to invest in community

### \*Initiatives & Program Expenses

Arts in Institutions	2,712,000
Arts In Neighborhoods	1,382,000
Arts in Learning	415,000
Support: Internal & External	392,090
	<b>4,901,090</b>



Arts in Institutions  
Arts in Neighborhoods  
Arts in Learning  
Support: Internal & External

# FY24 BOARD OF DIRECTORS

\*EX-OFFICIO MEMBER | ^EMERITUS MEMBER

**Jim Allen**  
Baird

**Josh Anderson**  
Heaven Hill Brands

**Cleo Battle**  
Louisville Tourism

**Regina Blake**  
Owsley Brown II Family  
Foundation

**Neville Blakemore**  
Great Northern Building  
Products, LLC

**Kristen Byrd**  
The PNC Financial Services  
Group, Inc.

**Carolle Jones Clay**  
Republic Bank & Trust

**Kiana Del\***  
Louisville Public Media

**Gregory T. Dutton**  
Frost Brown Todd LLP

**Charlie Farnsley**  
Bahe Farnsley Advisors

**Erica Fields**  
Fields Consulting LLC

**Lalania Gilkey Johnson**  
GE Appliances

**C. Edward Glasscock^**  
Frost Brown Todd LLP

**Jonathan D. Goldberg^**  
Goldberg Simpson, LLC

**Kimberly Halbauer**  
Fifth Third Bank

**DeVone Holt**  
Goodwill Industries of  
Kentucky, Inc.

**Barbara Lynne Jamison\***  
Kentucky Opera

**Alp Kayabasi**  
UPS

**Brad S. Keeton**  
Frost Brown Todd LLP

**Jessica Bennett Kincaid\***  
Louisville Metro  
Government

**Todd Klimek**  
PricewaterhouseCoopers  
LLC

**Mark Kull**  
Northwestern Mutual Life

**Todd P. Lowe**  
Parthenon, LLC

**Aaron Marcus**  
Dentons Bingham  
Greenebaum

**Brent McKim**  
Jefferson County  
Teachers Association

**Phil Poindexter**  
Stock Yards Bank & Trust

**Dr. Martin A. Pollio\***  
Jefferson County Public  
Schools

**Greg Pope**  
EY

**Yamilca Rodriguez**  
Yamilca Rodriguez  
Consulting

**Victoria Russell**  
PricewaterhouseCoopers  
LLP

**Scott Schafflein**  
EY

**Linda Schuster**  
QtheAgency

**Larry Schwartz**  
KPMG

**Woo Smith\***  
YPAL, Waller Lansden  
Dortch & Davis

**Vikki Stone**  
Office of Diversity,  
Equality & Training  
Kentucky Personnel  
Cabinet

**Carl Thomas^**  
V.V. Cooke Foundation

**Paul Thompson**  
Community Volunteer

**Leyla Touma Dailey**  
Doe-Anderson

**Kendrick Vaughn**  
Indeed

**Mary Beth Warner**  
Humana, Inc.

**Kellie Watson**  
Louisville MSD

**Mark F. Wheeler^**  
Central Bank

**Chris Whelan**  
LG&E and KU

**Markus Winkler\***  
Louisville Metro Council,  
President

**David Wombwell**  
US Bank

**Terry Wright**  
Stites & Harbison PLLC

**Nicole Yates**  
Passport Health Plan by  
Molina Healthcare



Republic Bank Performance Village,  
Photographer Bill Wine

# DONOR RECOGNITION

## CORPORATE/FOUNDATION/GOVERNMENT

### **SOCIETY 100**

#### **\$500,000 +**

Louisville Metro Government  
and Employees

#### **\$200,000 - \$499,999**

Brown-Forman and Employees  
Humana Foundation  
LG&E and KU Energy Foundation  
and LG&E and KU  
Energy/IBEW Local 2100  
Employees

#### **\$100,000 - \$199,999**

Edwin & Mary Jo Gheens,  
The Gheens Foundation, Inc.  
Humana/Humana Foundation  
Associates  
Norton Healthcare and  
Employees  
Republic Bank & Trust Company  
and Employees  
Yum! Brands, Inc. and Employees

### **CHAIRMAN'S SOCIETY**

#### **\$50,000 - \$99,999**

Frost Brown Todd LLP  
and Employees  
Jefferson County Public Schools  
Employees  
Kentucky Arts Council  
Lift a Life Novak Family  
Foundation  
Passport by Molina Healthcare  
PNC  
Stock Yards Bank & Trust  
Company and Employees

### **FARNSELEY SOCIETY**

#### **\$25,000 - \$49,999**

Baird and Employees  
Chase Kentucky/JP Morgan and  
Chase Foundation Employees  
Churchill Downs  
EY and Employees  
Fifth Third Bank Foundation/  
Fifth Third Bank KY and  
Employees  
Louisville Water Foundation  
and Louisville Water Company  
Employees  
Messer Construction Co.  
and Employees

(\$25,000 - \$49,999 cont'd)

Michter's Distillery, LLC  
PricewaterhouseCoopers LLP  
and Employees  
Wyatt, Tarrant & Combs, LLP  
and Employees

#### **\$10,000 - \$24,999**

Caesars Foundation of  
Floyd County  
Central Bank of Jefferson County  
and Employees  
Cherry Bekaert LLP and Employees  
Dentons Bingham Greenebaum  
and Employees  
Fund for the Arts Employees  
GE Appliances, a Haier company  
The Glenview Trust Company  
Employees  
The Gordon Foundation, Inc.  
Greater Clark County Schools  
Employees  
Kentucky Lottery Corporation  
Employees  
KPMG LLP and Employees  
Mildred V. Horn Foundation  
MSD-Louisville & Jefferson County  
Employees  
Faculty & Staff of the Oldham  
County Schools  
Optum Employees  
Stites & Harbison PLLC  
and Employees  
Stoll Keenon Ogden PLLC  
and Employees  
U.S. Bank Foundation and  
U.S. Bank Employees  
United Electric Co., Inc.  
White Clay Employees

### **LEADERSHIP CIRCLE**

#### **\$5,000 - \$9,999**

Arthur K. Smith Family Foundation  
The C. F. Pollard Foundation, Inc.  
Davis H. Elliot Company, Inc.  
Dinsmore & Shohl LLP  
and Employees  
Galen College of Nursing  
Givaudan Sense Colour  
and Employees  
Harding, Shymanski and Company,  
P.S.C. and Employees  
Hardscuffle, Inc.

(\$5,000 - \$9,999 cont'd)

Jefferson County Teachers  
Association  
Kentucky Select Properties  
Agents & Staff  
Klein Family Foundation  
Peyton Samuel Head Foundation  
Restaurant Supply Chain  
Solutions, LLC and Employees  
Sam and Bonnie Rechter Family  
Foundation  
Shelby County Public Schools  
Employees  
Transit Authority of River City  
Employees  
UPS Foundation  
V. V. Cooke Foundation  
WDRB-TV and WMYO-TV  
WHAS Crusade for Children

### **WINNER'S CIRCLE**

#### **\$500 - \$4,999**

Abel Construction Company  
Inc. Employees  
Algood Food Company  
Archdiocese of Louisville Schools  
Asplundh Tree Expert Company  
AT&T Kentucky Employees  
Bellarmine University Employees  
Blue Grass MOTORSPORT  
Bramco, Inc.  
Bullitt County Schools  
Employees  
Byerly Ford-Nissan, Inc.  
Carman Industries, Inc.  
Chemical & Industrial  
Engineering, Inc. Employees  
The Courtenay Foundation  
Dean Dorton Allen Ford  
Charitable Foundation and  
Dean Dorton Allen Ford  
Employees  
Deloitte and Employees  
DMLO CPAs Employees  
Family Health Centers, Inc.  
Employees  
The Gardner Foundation, Inc.  
Greater Louisville Inc. Employees  
Hall Contracting of Kentucky Inc.  
Hosparus Inc. Employees  
Howell & Howell Contractors, Inc.  
Independence Bank of Kentucky  
Employees



# DONOR **RECOGNITION**

## CORPORATE/FOUNDATION/GOVERNMENT

(\$500 - \$4,999 cont'd)

Jefferson Community and Technical College Employees  
Joseph & Joseph Employees  
K. Norman Berry Associates Architects  
Kentucky Bankers Association Employees  
Kentucky Education Association  
Kyana Packaging Solutions  
LBMC and Employees  
Leadership Louisville Center Employees  
Louisville Business First Employees  
Louisville Urban League Employees  
Mercer, Inc. Employees  
Metro United Way Employees  
Norton Clark Hospital  
Old National Bank Employees  
Ops Plus, Inc. and Employees  
PICKETT / PASSAFIUME / ARCHITECTS Employees  
River City Bank  
Schimpff's Confectionery, LLC  
Schwartz Insurance Group Employees  
ScionHealth Employees  
Semonin Realtors Employees  
Sewell Industrial Electronics  
Solberg Manufacturing  
Sterling G. Thompson Company, LLC and Employees  
Sypris Solutions Inc. and Employees  
Truist Employees  
University of Louisville Employees  
Vimarc Advertising Employees  
Vulcan Food Equipment Group  
WesBanco  
Whip-Mix Corporation  
Wilson & Muir Bank & Trust Company



Hui Kaululehua at the Republic Bank Performance Village, photography by Marvin Young



*Sense and Sensibility* at Kentucky Shakespeare. Photo by Brian Owens

# DONOR RECOGNITION

## INDIVIDUAL/LEADERSHIP DONORS

### SOCIETY 100

(\$10,000 - \$24,999 cont'd)

(\$1,949 - \$4,999 cont'd)

#### \$50,000 - \$99,999

Brooke Brown Barzun and  
Matthew Barzun  
Sarah and Campbell Brown  
Christina Lee Brown  
Mary and Ted Nixon

Karen McCoy and  
Bruce C. Merrick  
Deana and Michael Paradis  
Scott Schaftlein and  
Andrew Newton  
Jessica and Mac Thompson  
Amy and Steve Trager

Meredith Wilson Brown  
Gregory Bubalo and  
Pamela Klinner  
Renee Buckingham  
Janie and Tony Buckler  
Lee S. Burchfield  
Theresa Butler and  
Paul E. Receveur

#### \$25,000 - \$49,999

Ina and Allen Bond  
Nina Bonnie  
Owsley Brown III and  
Victoire Reynal Brown  
Augusta Brown Holland and  
Gill Holland, Jr.  
Stephen Reily and  
Emily Bingham  
Lindy B. Street  
Marianne and Jim Welch

### CHAIRMAN'S SOCIETY

#### \$5,000 - \$9,999

Missy and James Allen  
Carolle and Kenneth Clay  
Jennifer and Paul G. Fultz  
Mr. and Mrs. Gene Gardner  
Jonathan D. Goldberg and  
Jan M. West  
Karen and Roger Hale  
Shannon and Todd Klimek  
Kristen and Mark Kull  
W. Bruce Lunsford  
Moriah Ogilvie and Bill Holton  
Sue and Norman Pfau  
Brookes and Gregory Pope  
Cliff Rompf  
Heather and Larry Schwartz  
Dr. James and Lelia Sublett  
Dick Swope  
Pamela and Paul Thompson  
Mary Beth and Dean Warner  
Amy and David Wombwell

Kristen Byrd and Ty Smith  
Susan and Jeff Callen  
Michelle and Paul Costel  
Beverly and Bruce Cote  
Dior R. Cotten  
Elaine and John Crockett  
Leyla Touma Dailey  
Martha and Frank Diebold  
Mary and Jim Eaves  
Reverend John G. Eifler  
Lucas Elliott  
Amanda England  
Jennifer and Bryan Fantoni  
Mindy and Charlie Farnsley  
Liza and Doug Farnsley  
Erica and Patience Fields  
Pat and Vincenzo Gabriele  
Stephanie Marie Gillett  
Marry Ida and Larry Gray  
Kim and Greg Greenwood  
Andre Kimo Stone Guess and  
Cheryl Peterson Guess  
Sandal H. Gulick  
Donna and Frank Hagans  
Kimberly and Rick Halbauer  
Susan and Robert Hallenberg  
Paula and Frank Harshaw  
Berry L. Hayes  
Christopher R. Hungerford  
Judith A. Hunt  
Timothy Scott Huval  
Sharon and Gerald Karem  
Anastacia and Brad Keeton

#### \$10,000 - \$24,999

Anonymous  
Patricia N. Daulton  
Marlene and J. David Grissom  
Judith Hanekamp  
Mark A. Kristy  
Todd P. Lowe and  
Fran Ratterman

### FARNSELEY SOCIETY

#### \$1,949 - \$4,999

Larie and Barry Allen  
Maria S. Allison  
Christina and Josh Anderson  
Judy and Bob Ayotte  
Monica M. Beckmann  
Anne and Morton Boyd  
Josh Brock



Farnsley Society Reception,  
Photographer Bill Wine

# DONOR RECOGNITION

## INDIVIDUAL/LEADERSHIP DONORS

(\$1,949 - \$4,999 cont'd)

Amy and Matt Landon  
Amanda and John Littig  
Sally and Stanley Macdonald  
Heather A. Martin  
George McCracken III  
Jo and Brent McKim  
Susan S. Means  
John Megibben  
Jimmy Metzger  
Andrew Morzillo  
Warwick Musson  
John L. Myers  
Mary B. Nash  
W. Scott Neff and  
Michelle M. Wells  
Diane and Quang Nguyen  
Joshua O'Bryan  
Kathy and Kent Oyler  
Jennifer and Chris Reid  
Megan C. Reid  
Helen and Edward Rhawn  
Ty Richardson  
Anna Richey  
Mary and J. Daniel Rivers  
Jacqueline Rosky  
Joseph R. Ryan III  
Dr. and Mrs. William K. Schmied  
Linda and Hunt Schuster  
Beth and David Scinta  
Janna Leigh Singleton  
Louise and Mike Slaven  
Barbara Sexton Smith  
Patti and Brad Smith  
Vertner D. Smith III and  
Barbara K. West  
Don A. Stevens  
Loren and Clay Stinnett  
Mary Clay Stites  
Charlotte and John Clay Stites  
Lee and John Stough, Jr.

Andrea D. Strange  
Phyllis and John Tate  
Michael Tigue  
Anne Heilman Veno  
Libby and Jim Voyles  
Louise R. Wall  
Kathleen and Kerry Wang  
Porter Watkins and  
George Bailey  
Michelle and Mark Wheeler  
Krissie and Geoffrey White  
Debbie and Lawson Whiting  
Andrea Whitney  
W.P. Wiseman  
Nicole Yates  
Tinker Zimmerman

### LEADERSHIP CIRCLE \$1,000 - \$1,948

Anonymous  
Mary Beth Anderson  
Anne and Bobby Arnold  
Karen E. Ash  
Linda and Joseph Baker  
Andrew Battjes  
Timothy P. Bauman  
Jessica Bird and  
Neville Blakemore  
Julie A. Boatright  
Deneen Bogdon  
Mary Bone  
Bethany A. Breetz and  
Ronald L. Loughry  
Erin Brown  
Prentice E. Brown  
Rose and Allen Bush  
Dr. Brad Calobrace and  
Mr. Ricardo Calobrace  
Sally T. Campbell  
Theresa Agnes Canaday  
Cynthia Caudill

(\$1,000 - \$1,948 cont'd)

Nellie Childers  
Darryl S. Clay  
Monique Clay  
Diane Cornwell  
Michael E. Cowherd  
Robert L. Crady, III  
Marc and Lisa DeJaco Crutcher  
Shannon Cummings  
Amy Curry  
Leonidas Deters and  
Penelope Shaw  
Brian Devore  
Susan and Bill Donovan  
Nicole Dorion  
Annie and Gregory Dutton  
Michael Fine  
Ramona and Christopher Ford  
Leslie and  
Michael Gregg Fowler  
Joyce and Gordon Garner  
Glenda and Brent Garrett  
Peter Garrison  
Kathleen M. Geile  
Kevin H. Gibson  
Tricia and Jeff Gill  
Mary F. and  
C. Edward Glasscock  
Joseph S. Grant  
Elaine and Steve Gravatte  
Marian M. Griffin  
Lourdes and Culver Halliday  
Edwin B. Hamblin  
Libby Hancock  
Allen L. Harris and  
Alexis K. Rich  
Mary R. Harville  
Kirsten Hawley and Scott Kiefer  
Hunter W. Hayes  
Jeannine and John Hayes  
Carol Hebel

# DONOR RECOGNITION

## INDIVIDUAL/LEADERSHIP DONORS

(\$1,000 - \$1,948 cont'd)

Melinda L. Heck, CPA  
James A. Heffley  
Carleen and Carl Herde  
Marcia and Chris Hermann  
Thaddeus Hoover  
Jill and William Howard  
Sophie B. Hummer  
Katie and Joe Hurt  
Jan Hyland  
Marcia G. James  
Jill and Franklin Jelsma  
Marya L. Johnson  
Alan Jones  
Rhonda and Breck Jones  
James Joseph  
Elizabeth Kaplan  
Jennifer M. Keisling  
Mary Carol and Donald Kelly  
Sandra J. Khoury  
Mark A. Kircher  
Robert J. Knadler  
Harriet L. Lair and Barry  
    Younkie  
Charles Troy Lambert  
Marie B. Larsen  
Kimberly Lasley  
Suanna Leslie  
Jaelithe and Matthew  
    Lindblom  
Judy and Steven Lippmann  
Anna-Marie B. Locke  
Lynch Family  
Susan and Philip Lynch  
Joyce and Alan MacDonald  
Ed and Sallie Manassah  
Aaron W. Marcus and  
    Milja Zgonjanin  
Ashley and Arthur Masterson  
Sharon A. Mattingly  
Diane and Edward Maynard

George H. McMinn III  
Pamela and Carl Miller  
Justin Moore  
Carolyn and Michael Mountjoy  
Susan Neal  
Jennifer L. Nixon  
Anne Ogden  
Andrea and Scott Olinger  
Gail and Mark Oppenheimer  
Dr. Ingrid Osswald and  
    Dr. Steven Stern  
Laura L. Padgett  
Denise and Alan Parsons  
Kevin Paul  
Martha N. Pecceu  
Martha M. Plamp  
Elizabeth and Philip  
    Poindexter  
Deanna Polsgrove  
Becky and Sean Ragland  
Tracy Reid  
Cary and Michael Ricketts  
Laura and Jonathan Riehm  
Carmen and Kendrick Riggs  
Janet and Richard Rink  
David Robie  
Yamilca Rodriguez and  
    Rolf Provan  
Mary and Robert Rounsavall III  
Victoria Russell  
Anne and Terry Sams  
Charles R. Schram  
Andrea and Brett Shepherd  
Anna and Robb Shrader  
Andrew Simon  
Ruth Simons  
Sara and Kennedy Simpson  
David S. Sinclair  
Cory J. Skolnick  
James C. Smith  
Charles Kevin Spine  
Beverly and Clarence Stokes

Bill Stone  
Evie and Colin Stouffer  
Jennifer S. Stoutt  
Paul Stratman  
Mr. and Mrs. R. James Straus  
John T. Sweeney III  
Leslie Texas  
Yano K. Touma  
Jill and Dave Vogel  
Amy L. Wakeman  
Joyce and Jim Walters  
Kathleen and  
    Matthew Watkins  
Robert Wessel  
Becky and Will West  
Edith and Bill Weyland  
Chris Whelan  
Tammy O. White  
Phoebe A. Wood  
Dr. Susan G. Zepeda and  
    Dr. Fred P. Seifer

## WINNER'S CIRCLE

**\$500 - \$999**

Anonymous  
Judith D. Abel  
William Abel  
Kat and Josh Abner  
Mandy Adams  
Cindy Aikens  
Kathryn Akural  
Christy A. Ames  
James M. Archer  
Anne-Britton Arnett  
Avery Ashby  
Consuelo Bagaipo  
Christopher D. Balmer  
Jennifer Y. Barber  
Chad C. Barras  
Olivia Basham  
Kathy and Larry Beach



# DONOR RECOGNITION

## INDIVIDUAL/LEADERSHIP DONORS

(\$500 - \$999 cont'd)

Jessica and Corky Beatty  
Alisha Bell  
Lonnie E. Bellar  
Elizabeth Bennie  
Dennis Bernard  
Yadira A. Blackwell  
Anya Bond-Beckley  
Kimberly A. Boland and  
Conor O'Driscoll  
Bonnie and Lawrence Boram  
Sarah Bovine  
Meghan Boyd  
Sharica L. Brackens  
Qiana L. Bradley  
David Bratcher  
Anna M. Brock  
Esther and Robert Brown  
Dr. Anne and Dean Bucalos  
Hanna Buckner  
Angela Stinebruner Burchett  
Angela Borgan  
Shannon and Patrick Burnett  
Amy Burnette  
Jeffrey A. Calabrese  
Benjamin Caldwell  
Diane Calhoun-French  
Lea A. Callico  
Richard M. Campbell  
Priscilla Capes  
Amanda and Samuel Castle  
Amy Kirsten Caswell  
David Catlett  
Mandy Cecil  
Cheryl P. Champine  
Tawanda Chitapa  
Patrick Y. Choe  
Gretchen and John Clark  
Katherine E. Cline  
Adam Coalter and  
Kathleen Shiner

Hon. J. Terrence and  
Peggy Cody  
Angela Coltrane  
David G. Connelly  
Alfonso Cornish  
Kevin W. Cornwell  
Katherine and Donald Corson  
David L. Cosby  
Karen M. Cost, Ph.D.  
Bonita B. Cress  
Michael J. Croce  
Dacia and Christopher Croot  
Leanne Cunningham  
Helena M. Dahman  
Ana C. Danies  
Bertha Darden  
Andy Darrah  
Raymond W. Daub  
Kelley Dearing Smith  
Carol W. Dennes  
Patrice J. Downing  
Michael P. Drake  
Amy A. Drooker  
Jayme Dunn  
Candice B. Dupree  
Teresa Earley  
Joshua A. Eberenz  
Shirley M. Eisman  
Paula Elder  
Linda and William Ellison  
Angela Enyard  
Angie M. Evans  
Chrissy Evans  
Lealia M. Evans  
Marjorie A. Farris  
Jennifer and John Fendig  
Michael A. Ferguson  
Christie M. Fessel  
Thomas E. Fielding  
Mary L. Fischer  
Lori R. Forbes  
Betsy and Clyde Foshee

Terri and Scott Foster  
Edith Frakes  
Sue A. Freas  
Jill and Gary Fuchs  
Marti Gardner  
Martin Gerrety  
Grace and James Giesel  
Jenny and Scott Godthaab  
Linda and Stuart Goldberg  
Peter Goodman  
Christopher T. Gorman  
Mary Louise Gorman  
Michael W. Gough  
Father Joseph T. Graffis  
Chasity and Bradley Grauel  
Molly Greer  
Paula and Michael Grisanti  
Cynthia R. Grissom  
Jeanne M. Groene  
Betty and William Guenther  
Adam W. Hack  
Kristina and Michael Hahn  
Adam Hall  
Kenneth Hall  
John T. Hamm  
Lori E. Hammond  
Je'retta Harris  
Sue Sue and  
Stephen Hartstern  
Daniel Hawk  
Michael Haycox  
Michelle and Kyle Henderson  
Angela R. Henry  
Ellen Hesen  
Vanessa Hillerich  
Willis W. Hobson  
DeVone Holt  
Michael K. Huffines  
Susan L. Humphrey  
Alexander R. Hunn  
Virginia L. Hyland  
Angela Irwin

# DONOR RECOGNITION

## INDIVIDUAL/LEADERSHIP DONORS

(\$500 - \$999 cont'd)

Megan E. Jacobs  
Kristel Jensen  
Thomas A. Jessee  
Megan Jones  
Deedee and Tom Jordan  
Cara and Kevin Joynt  
Patrick Nicholas Judd  
Alan Junkins  
Lisa P. Keels  
Justin C. Keeton  
Richard A. Kelley  
Mary M. Kelly  
Josh M. Ketterer  
Mark D. Ketterer  
Andy Kim  
Laura Kinder  
Kyle D. Kingery  
Jessica D. Klein  
Laura A. Koch  
Heather Kolasinsky  
Karen M. Kuban  
Sara Lancaster  
Jason C. Larkin  
John Lavanga  
Anthony Leachman  
Alice Ann Leffler  
Dolores and Charles Leis  
Stephen Leon  
Andrew Leung  
Sarah and Boz Lindgren  
Joseph Link  
Frank List  
Rachel Lopez  
Kristina Megan Lott  
Mr. and Mrs.  
Rick Edward Lovekamp  
Bryan A. Loy  
Katherine and Mark Loyd  
Shannon M. Loyd  
Jennifer Kaelin Luhrs

Abby and Fairleigh Lussky  
Charles Lyninger  
Rosy and Joseph Lyons  
Denise and Jim Maier  
Donna Malcomb  
Michael D. Maloff  
Dean P. Malthouse  
Lance Mann  
Clay Martin  
Martha and Gerald Martin  
Joshua E. Martin  
Mary Theresa Massey  
Daniel D. Maye  
Leigh Mayes  
Melanie McCoy and  
Latham Chase Speiden  
Tina M. McCune  
Harry Albert McDowell  
Monique and Glen McFarland  
Chad McPherson  
Laura and Andrew Means  
Lynn and Roy Meckler  
Diane Medley and  
Prewitt Lane  
Agnes and James Metzger  
Timothy P. Meyer  
Anthony W. Miller  
Matthew R. Miller  
Susan B. Miller  
Shane A. Missi  
Arcelia Moore  
Daniel Moore  
Jennifer A. Moore  
Clay L. Morton  
Tara and Cash Moter  
Josh S. Moulton  
Robert B. Mouser  
Joseph A. Mudd  
Teresa Munson  
Jeanne and Charlie Muntan  
Anne Murner  
Rosita Napier-Brown

Kelli B. Nelson  
William R. Nelson  
Coleen Nettesheim  
Robyn O. Newstadt  
W. Barrett Nichols  
Mark K. Nickel  
Benjamin P. Nohalty  
Patrick L. O'Daniel-Munger  
Brian Olberz  
Trish Osborn  
Mary Ann and Don Ott  
Richard A. Pape  
Julie R. Patterson  
Benita Payne  
Matthew Paynter  
Trish Pearl  
Penelope J. Peavler and  
Charlie Grass  
Gregory Petrites  
Kristin and Logan Pichel  
Becky and Robert Picklesimer  
Stephanie S. Pierson  
Katherine S. Pleasant  
Justin K. Potter  
Christopher Darrell Poynter  
Kelly L. Putty  
Susan G. Pyles  
Mary Rademaker  
Mary K. Radke  
Peter O. Ramsey  
Elizabeth C. Rapp  
Mark Raque  
Erin H. Rasinen  
Joseph Michael Reagan  
Luke R. Rebholz  
Jody Renner-Nantz  
Sadiqa N. Reynolds  
Traci Ann Rice  
Ashlee Richards  
Michael R. Ricketts  
Zaccarry T. Ricketts  
Connie L. Riffe

# DONOR RECOGNITION

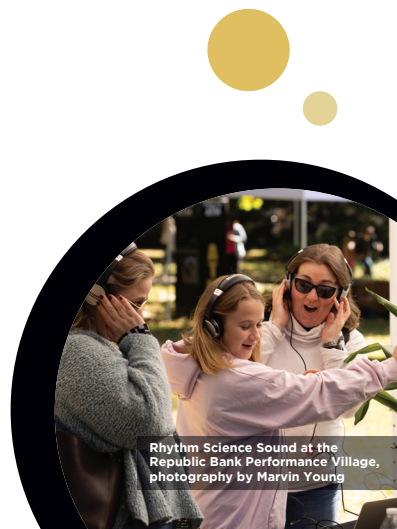
## INDIVIDUAL/LEADERSHIP DONORS

(\$500 - \$999 cont'd)

Karen and John Rippy  
Elisha Risher  
John M. Rittichier  
Sandra and Edward Robinson  
Vicki Lynne Romanko  
Dr. John and Bonnie Roth  
Grace and Matthew  
Rutherford  
Chris S. Rutledge  
Lacey and Jeff Ruzanka  
William D. Saltsgauer  
Dawn S. Samuels  
Terri and Russell Saunders  
Julie Schmidt  
Craig E. Schmitt  
Cindy and Matt Schwartz  
The Schweinhart Living Trust  
Rebecca and Eric Scott  
Ramona Sharp  
Melissa Sharpe  
Erin Shaughnessy  
Diane and Roger Shott  
Jennifer S. Shumaker  
Susan Y. Simmons  
Alicia Sleadd  
Adam Ross Smith  
Amy K. Smith  
Dia Smith  
Karen and Farrell Smith  
Lauren Smith  
Terri and Rick Smith  
Daphne M. Snedegar  
Evanthia Speliotis  
Terrence Spence  
Beverly Spindler  
Chris Staples  
Kim Stawski  
Kelly Stearman  
William Keith Steinmetz  
Andrew R. Steitz

Lisa Stephens  
Carolyn L. Stephenson  
Cynthia L. Stewart  
Don W. Stewart  
Christopher Dean Stilts  
Kate Stites  
Vikki Stone  
Mary and Bill Stone  
Melissa B. Stovall  
Steven J. Stragand  
Elizabeth and Matt Strehl  
Michele Sullivan  
Marya K. Summers  
William E. Summers V  
William S. Sutter  
Kenji Tashiro  
Jessica L. Taylor  
Sally and John Taylor  
Thomas N. Taylor  
Jessica Teague  
William Teague  
Jeanne and Jim Theiss  
Ellen and Carl Thomas  
Tracy Thornsberry  
John A. Thurman  
Priscilla and Robert Tillett  
Chandra Marie Kaelin  
Timpano  
Alan Titus  
Arthur Scott Trager  
Helene and Andrew  
Trager-Kusman  
Dr. Nancy L. Urbscheit  
Joanna and Kenneth Veirs  
John Vidal  
Michael L. Vincent  
Renee J. Wachtel  
Laura H. Wagner  
Phillip L. Walker  
Nicole Walton  
Morgan Ward  
Linda and Kevin Wardell

JoJo Warfield  
Antonia L. Weaver  
Michael S. Weaver  
Stephen M. Weihe  
Barbara and Frank Weisberg  
Claudia and Kendrick Wells  
Ben Whatton  
Twila Wheat  
Mary Wheeler  
Natalie C. White  
Stephanie White  
Deanne and William Whitman  
Susan M. Diamond and  
Marty D. Williams  
Tonya and Matthew Williams  
Mr. and Mrs. Douglas  
Winkelhake  
Mary Bert Wolf  
Stephi and Jonathan Wolff  
Carolyn Wright  
Heather and Terry Wright  
John Yahnig  
Sara L. Yamin  
Mellissa Yeagle  
Cynthia Young  
Yong Zhang  
Stephen Zocklein



Rhythm Science Sound at the  
Republic Bank Performance Village,  
photography by Marvin Young



**623 W. MAIN STREET  
LOUISVILLE, KY 40202**

**fundforthearts.org | 502.582.0100**

**with support from**



Sponsored by the Kentucky Arts Council. The state arts agency supports the Fund for Arts with state tax dollars and federal funding from the National Endowment for the Arts.